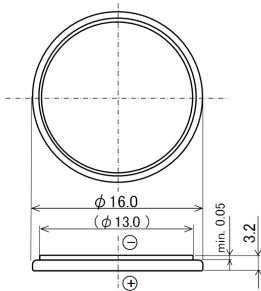


# CR1632

## CR Coin-type Lithium Battery



\* ( ) is for reference purpose only  
This drawing is a schematic diagram showing the dimensions.  
The dimensional ratio is different from the actual battery.

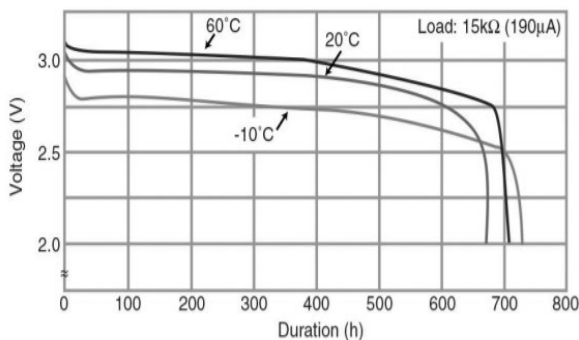
### Features & Benefits

- Offers high-rate pulse discharge
- Available in a range of compact sizes and capacities, from thin-type to high-capacity models
- Excellent low-temperature performance enhanced by manganese-dioxide positive pole

### Applications

Remote keyless entry, Card remote controls, memory backup, security price tags, smart transmitter tags and others.

#### Discharge temperature characteristics



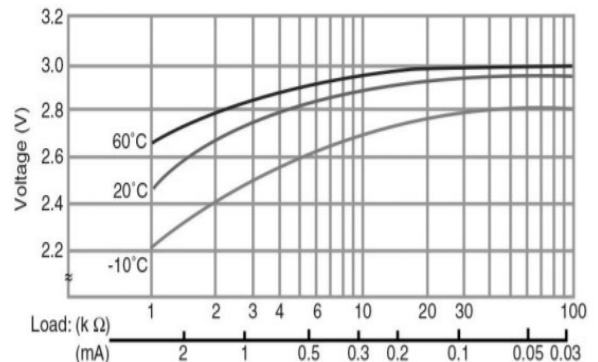
### Specifications

Nominal voltage		3V
Nominal capacity		140mAh
Continuous drain		0.1mA
Dimensions* 1	Diameter(Max.)	16.0mm
	Height(Max.)	3.2mm
Weight*1		Approx. 1.9g
Operating temperature*2		-30°C to +85°C

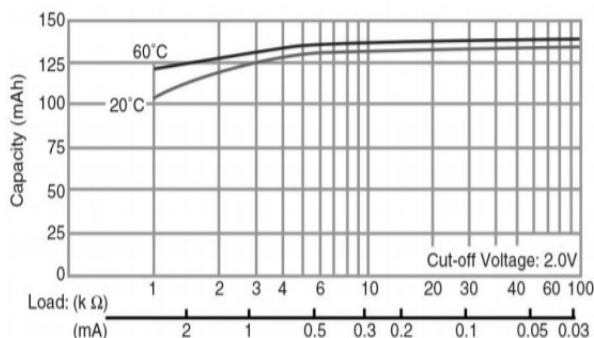
\*1 Without tabs.

\*2 Please consult Panasonic when anticipating usage in operating temperatures of 70°C or above.

#### Operating voltage vs. load resistance (voltage at 50% discharge depth)



#### Capacity vs. load resistance



[Panasonic Energy Co., Ltd.](http://Panasonic Energy Co., Ltd.)

As of February, 2026. Panasonic offers batteries with tabs or lead wires. This data in this document is for descriptive purposes only and is not intended to make or imply any guarantee or warranty. The contents of this product information are subject to change without notice.

