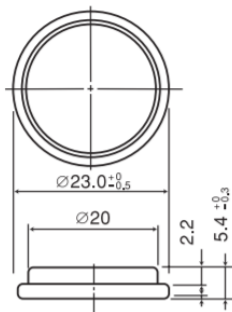


CR2354

CR Coin-type Lithium Battery



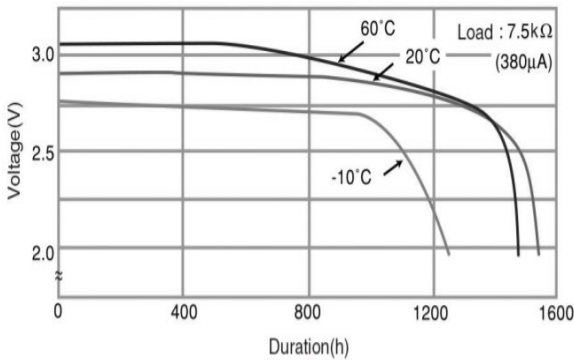
Features & Benefits

- Offers high-rate pulse discharge
- Available in a range of compact sizes and capacities, from thin-type to high-capacity models
- Excellent low-temperature performance enhanced by manganese-dioxide positive pole

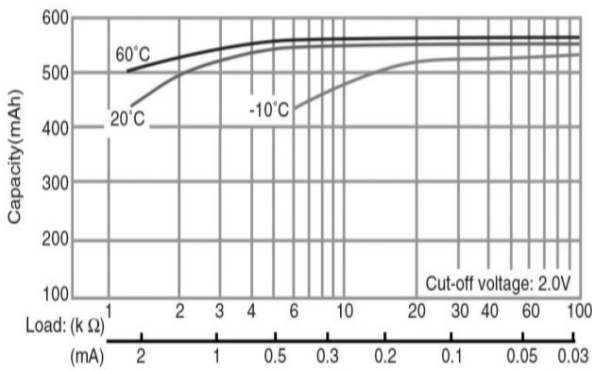
Applications

Remote keyless entry, Card remote controls, memory backup, security price tags, smart transmitter tags and others.

Discharge temperature characteristics



Capacity vs. load resistance



Specifications

| | | |
|-------------------------|----------------|----------------|
| Nominal voltage | | 3V |
| Nominal capacity | | 560mAh |
| Continuous drain | | 0.2mA |
| Dimensions* 1 | Diameter(Max.) | 23.0mm |
| | Height(Max.) | 5.4mm |
| Weight*1 | | Approx. 5.7g |
| Operating temperature*2 | | -30°C to +85°C |

*1 Without tabs.

*2 Please consult Panasonic when anticipating usage in operating temperatures of 70°C or above.

Terminal types

Please see the documents for the terminal and lead wire settings.

- [Line up of tab terminal types by product number](#)

Operating voltage vs. load resistance (voltage at 50% discharge depth)

